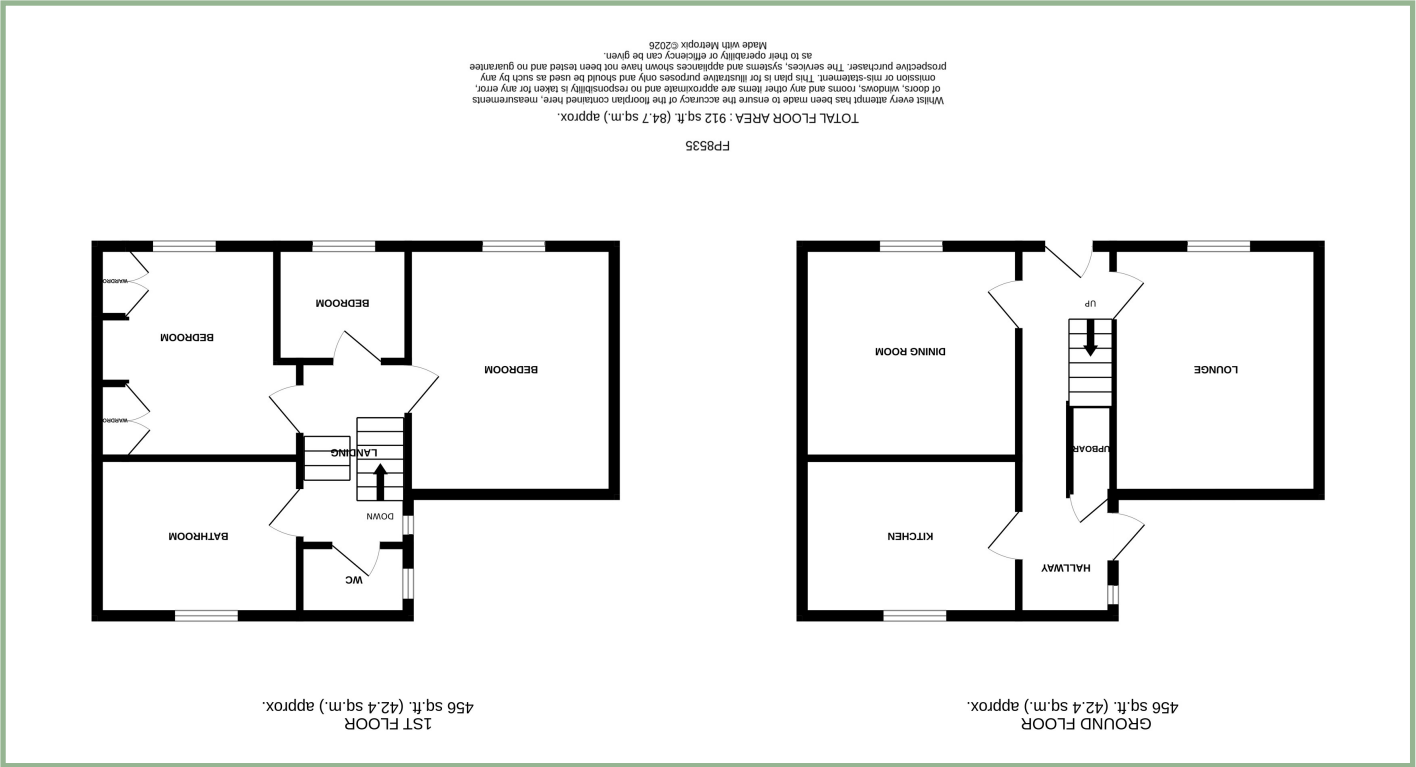




Score	Energy rating	Current	Potential
92+	A		
81-91	B		
69-80	C		
55-68	D	60 D	
39-54	E		
21-38	F		
1-20	G		



THREE BEDROOM, DOUBLE FRONTED END TERRACE COTTAGE

Description

A charming three bedroom, double fronted end terrace cottage situated on the outskirts of the desirable village of Dwygyfylchi. The White House Cottage enjoys far reaching views over the sea, mountains, Puffin Island, Anglesey and The Great Orme with tiered rear and side garden and off road parking for one vehicle. The accommodation comprises: Entrance hallway, lounge with gas stove (potential to reinstate a log burner), dining room with plate rack and electric fire (potential to reinstate a gas or log burner), modern kitchen with gas range, space and plumbing for a washing machine and fridge/freezer, rear hallway area with stable door to the rear garden, under stairs storage cupboard and cupboard housing the boiler. To the first floor: Good sized landing with access to the boarded loft, with ladder and Velux window. Master bedroom, a second double bedroom with built in wardrobes and a third single bedroom, good sized bathroom with bath and separate shower cubicle and separate W.C. UPVC sash double glazing and gas fired Biasi combination boiler. To the outside there is gated driveway parking for one vehicle and a low maintenance rear courtyard area with stone outhouse. There are steps and paths that meander around the lovely tiered garden which lead to several seating areas from where you can enjoy the view and the stunning sunsets. There is a poly tunnel, greenhouse and gate providing access onto the mountain. Throughout the garden there is a large variety of established plants and shrubs. To the left hand side of the garden the current owner rents this piece of land on a £1 per annum peppercorn rent and has created a landscaped garden area with raised beds for both growing flowers and vegetables and several seating areas. The owner of this piece of land has agreed that the current agreement can be passed onto the new owner of The White House Cottage.

- ✓ CHARMING THREE BEDROOM END TERRACE COTTAGE
- ✓ ENJOYS LOVELY FAR REACHING VIEWS
- ✓ SITUATED CLOSE TO THE GOLF COURSE AND LOVELY WALKS
- ✓ VERY WELL MAINTAINED BOTH INSIDE AND OUT
- ✓ DRIVEWAY PARKING FOR ONE VEHICLE
- ✓ FREEHOLD
- ✓ NO CHAIN

Hallway

19’ 4” x 4’ 11” 5.89m x 1.50m

Lounge

12’ 11” x 10’ 10” 3.94m x 3.30m



Dining Room

10’ 11” x 11’ 1” 3.32m x 3.38m



Kitchen

11’ 4” x 8’ 6” 3.45m x 2.59m



Landing

9’ 10” x 4’ 9” 3m x 1.44m

Bedroom One

12’ 11” x 11’ 1” 3.94m x 3.38m



Bedroom Two

10’ 10” x 10’ 1” plus build in wardrobes 3.30m x 3.07m

Bedroom Three

6’ 10” x 6’ 1” 2.08m x 1.85m

Bathroom

11’ 4” x 8’ 8” 3.45m x 2.64m

W.C

4’ 10” x 3’ 6” 1.47m x 1.06m

Location

Dwygyfylchi is a picturesque village located at the bottom of the Sychnant Pass and is on the edge of the Snowdonia National Park. It is near Penmaenmawr with its local shops and amenities and close to the A55 Expressway for easy access to Conwy, Bangor or Chester.

Directions

From our Conwy office take the Bangor Road out of the Square and turn first left into Uppergate Street, proceed up the hill, pass through the walls and bear immediate right onto Sychnant Pass Road, proceed along this road taking the scenic route for approximately 3? to 4 miles going through the Sychnant Pass, as you approach the village you will see the Fairy Glen Public House on the left. Continue along this road where The White House Cottage can be found on the left.

Council Tax Band: D (provided on www.voa.gov.uk)
Energy Efficiency Rating: D
Tenure: Freehold

3 Bedroom Terrace Cottage

The White House Cottage
Conwy Old Road
Dwygyfylchi
LL34 6SG

£285,000

Reference Number: FP8535
10/2/2026

Fletcher & Poole,
3 Lancaster Square,
Conwy, LL32 8HT

Registered Company
Number 4687367

Valuation

Thinking of moving in the near future please do not hesitate to ask for a FREE sales valuation

Viewing

By appointment contact:

tel: 01492 583100
fax: 01492 583616
email: conwy@fletcherpoole.com
web: www.fletcherpoole.com

